

PLEASE CHECK WWW.MOLEX.COM FOR LATEST PART INFORMATION

Part Number: [0510150500](#)
Status: **Active**
Description: 2.00mm (.079") Pitch Board-In Crimp Housing, Low Profile, 5 Circuits

Documents:

3D Model	Product Specification PS-51015-002 (PDF)
Drawing (PDF)	RoHS Certificate of Compliance (PDF)
Product Specification PS-51015-001 (PDF)	

Agency Certification

UL	E29179
----	--------

General

Product Family	Crimp Housings
Series	51015
Product Name	Board-In

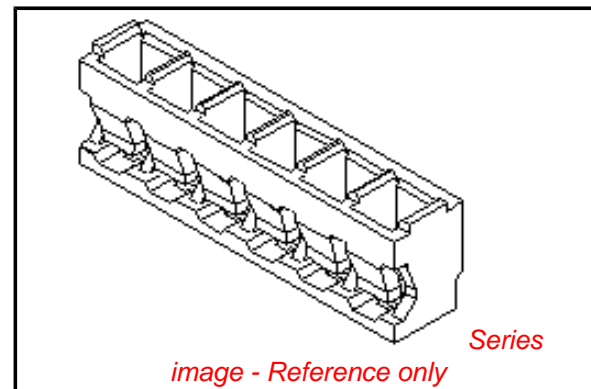
Physical

Circuits (maximum)	5
Color - Resin	Natural
Flammability	94V-0
Gender	Male
Glow-Wire Compliant	No
Material - Resin	Nylon
Number of Rows	1
Packaging Type	Bag
Panel Mount	No
Pitch - Mating Interface (in)	0.079 In
Pitch - Mating Interface (mm)	2.00 mm
Stackable	No
Temperature Range - Operating	-40°C to +105°C

Material Info

Reference - Drawing Numbers

Product Specification	PS-51015-001, PS-51015-002, RPS-51015-001, RPS-51015-003, RPS-51015-004, RPS-51015-006
Sales Drawing	SD-51015-**00



EU RoHS

ELV and RoHS Compliant
REACH SVHC Contains SVHC: No
Halogen-Free Status

China RoHS



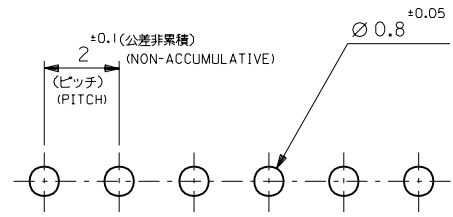
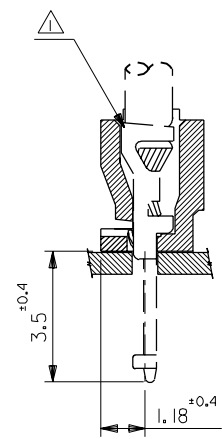
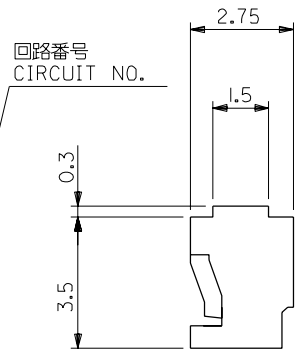
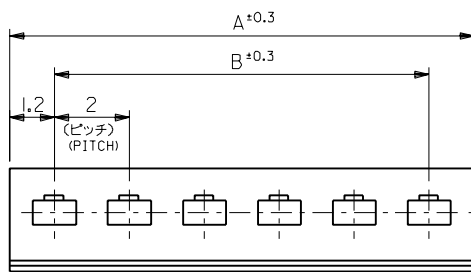
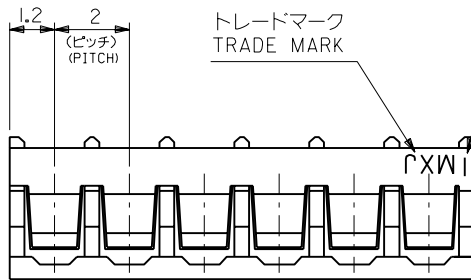
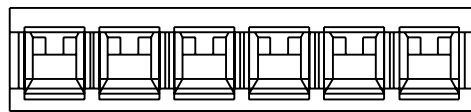
Need more information on product environmental compliance?

Email productcompliance@molex.com
 For a multiple part number RoHS Certificate of Compliance, [click here](#)

Please visit the [Contact Us](#) section for any non-product compliance questions.

Search Parts in this Series
[51015Series](#)

Use With
[50034](#)



基板取付穴推奨寸法

(基板厚: t=1~1.6mm)
RECOMMENDED PC BOARD
HOLE DIMENSION
(THICKNESS: t=1~1.6mm)

注記
NOTE

△ 適合ターミナル: 50034-8*00
APPLICABLE TERMINAL: 50034-8*00

28	30.4	51015-1500	15
26	28.4	↑ -1400	14
24	26.4	-1300	13
22	24.4	-1200	12
20	22.4	-1100	11
18	20.4	-1000	10
16	18.4	-0900	9
14	16.4	-0800	8
12	14.4	-0700	7
10	12.4	-0600	6
8	10.4	-0500	5
6	8.4	-0400	4
4	6.4	↓ -0300	3
2	4.4	51015-0200	2
B	A	ENG.NO.	種数 NO. OF CKT

材料 MATERIAL ナイロン66, UL94V-0 NYLON66, UL94V-0		仕上げ FINISH —		適用電線範囲 WIRE RANGE —		被覆外径 INS. RANGE —		DRAWN BY '96/05/28 H.I.IJIMA		CHK'D BY '96/05/28 M.FUKUSHIMA	
角度 ANGLE +3°		30以上 OVER +0.3		10以上 30未満 UNDER +0.25		10未満 UNDER +0.2		DRAWN BY '96/05/28 M.ENOMOTO		CHK'D BY '96/05/28 M.FUKUSHIMA	
再作図 REDRAWN		変更内容 REVISION RECORD		DR. CHK.		日付 DATE		REVISION RECORD		DATE	

MOLEX JAPAN CO., LTD. 日本モレックス株式会社	
REVISE ONLY ON CAD SYSTEM	
TITLE 名称 2.0 BOARD IN CONN. HSG.	
DWG. NO. SD-51015-**-00	REV B